



RiteChoice
Ducting, LLC

Industrial Ventilation Ducting

Flexible Ducting, Custom Cuffs,
Finishes, and Accessories

CoolFlex™

Standard Ventilation Duct



Specifications

Fabric Type	Laminated PVC
Fabric Weight	10 oz. or 14 oz.
Temperature	-20 to 180 F°
Length	25 ft. (Custom upon request)
Diameter	6-50 in.
Pitch	2-7 in.
Wire	Steel
Colors	10 oz: White, Orange 14 oz: Black, Red, Yellow, Green, Blue
Bond Construction	Welded (Sewn upon request)
Custom Finishes	Belt Cuff, Hoop Cuff, Pin-Lock Cuff, Worm-Gear Cuff
Wear Strip (Optional)	Black, White, Blue, Yellow, Green, and Red



Features

- Utilize for a wide range of applications
- Low thermal conductivity with our UV Stabilized Fabric
- Handles harsh environments and is Mold and Mildew Resistant
- Flame Resistant in accordance with UL94VTM-O, California Fire Marshal, and NFPA701 Specifications

Markets

- Construction
- Temporary Heating and Cooling
- Restoration
- Disaster Relief
- Rental, Tent and Structure

Applications

- Utility Blowers
- Ambient Air Distribution
- Dehumidification
- Air Conditioning
- Spot Cooling

CoolFlex™

Infrared Blockout Ventilation Duct



Specifications

Fabric Type	Infrared Blockout Laminated PVC
Fabric Weight	14 oz.
Temperature	-20 to 180 F°
Length	25 ft. (Custom upon request)
Diameter	6-50 in.
Pitch	2-7 in.
Wire	Steel
Colors	White or Black
Bond Construction	Welded (Sewn upon request)
Custom Finishes	Belt Cuff, Hoop Cuff, Pin-Lock Cuff, Worm-Gear Cuff
Wear Strip (Optional)	Black, White, Blue, Yellow, Green, and Red



Features

- Utilize for a wide range of applications in high temperature climates
- Infrared Blockout Technology blocks out UV rays
- Handles harsh environments and is Mold and Mildew Resistant
- Flame Resistant in accordance with UL94VTM-O, California Fire Marshal, and NFPA701 Specifications

Markets

- Construction
- Temporary Heating and Cooling
- Restoration
- Disaster Relief
- Rental, Tent and Structure

Applications

- High Temperature Climates
- Ambient Air Distribution
- Dehumidification
- Air Conditioning
- Spot Cooling and Utility Blowers

CoolFlex™

Insulated Ventilation Duct



Specifications

Fabric Type	Double Layered Laminated PVC with Anti-Sweat Insulation
Fabric Weight	10 oz. + Insulation
Temperature	-20 to 180 F°
Length	25 ft. (Custom upon request)
Diameter	8-27 in.
Pitch	4-6 in.
Wire	Steel
Colors	White
Bond Construction	Welded (Sewn upon request)
Custom Finishes	Belt Cuff, Hoop Cuff, Pin-Lock Cuff, Worm-Gear Cuff
Wear Strip (Optional)	Black, White, Blue, Yellow, Green, and Red



Features

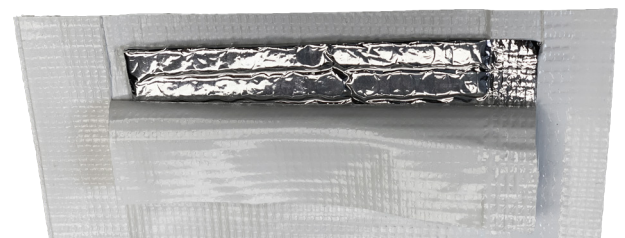
- Insulation reduces sweating and prevents thermal loss or gain
- Utilize for a wide range of applications
- Handles harsh environments and is Mold and Mildew Resistant
- Flame Resistant in accordance with UL94VTM-O, California Fire Marshal, and NFPA701 Specifications

Markets

- Construction
- Temporary Heating and Cooling
- Restoration
- Disaster Relief
- Rental, Tent and Structure

Applications

- HVAC Systems
- Ambient Air Distribution
- Dehumidification
- Air Conditioning
- Spot Cooling and Utility Blowers



DynaFlex™

Hi-Temp Ventilation Duct



Specifications

Fabric Type	Silicone Coated Fiberglass
Fabric Weight	13 oz. or 14 oz.
Temperature	Up to 550 F°
Length	25 ft. (Custom upon request)
Diameter	6-50 in.
Pitch	2-7 in.
Wire	Steel
Colors	13 oz: White 14 oz: Black
Bond Construction	Sewn
Custom Finishes	Belt Cuff, Hoop Cuff, Pin-Lock Cuff, Worm-Gear Cuff
Wear Strip (Optional)	Black, White, Blue, Yellow, Green, and Red



Features

- Excellent heat stability and resistant to extreme temperatures
- High-strength sewn construction suitable for many applications
- Handles harsh environments and is Mold and Mildew Resistant
- Flame Resistant in accordance with UL94VTM-O, California Fire Marshal, and NFPA701 Specifications

Applications

- High Temperature Air Handling
- Ambient Air Distribution
- Dehumidification
- Air Conditioning
- Spot Cooling and Utility Blowers

Markets

- Construction
- Temporary Heating and Cooling
- Restoration
- Disaster Relief
- Rental, Tent and Structure

Custom Finishes

End Cuffs for CoolFlex™ and DynaFlex™



Machine End

The most common type of end that allows for a variety of connections. This consists of a double layer of fabric that extends past the end of the duct. Machine End allows for the most flexibility in attachments.

Hoop Cuff

A sleek finished cuff that features a wire ring enclosed in fabric. This cuff is ideal for interlocking duct ends by inserting the cuff into another section.

Belt Cuff

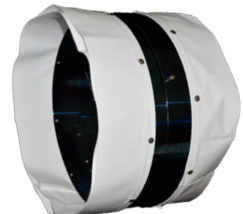
Ditch the zip-ties for a duct cuff with a built-in buckle. This style has a snug fit with an easy release and is fabricated using 1" polyester webbing with nickel-plated buckles.

Pin-Lock Cuff

This cuff provides an easy snap in snap out approach with pins that are fastened into a riveted metal collar on the end of the duct.

Worm-Gear Cuff

Worm Gear Cuffs consist of a stainless-steel worm gear clamp enclosed in fabric. When the included screw is turned on the clamp, the metal band tightens around the duct.



Duct Accessories

Ceiling Panel Kit and Duct Splitter



Ceiling Panel Kit

Panel Dimensions	24 in. x 24 in.
Construction	Plastic
Hole Diameter	12 in, 14 in, 16 in, 20 in
Included Duct	8 ft. Standard CoolFlex™
Panel Color	White
Additional Features	Grooved End



Duct Splitter

Fabric Type	Laminated PVC
Diameters	12 in, 20 in, 24 in
Connections	Splits one duct into two



Get Started Today:

RiteChoice Ducting, LLC
1700 Rockwood Drive, Suite E
Waukesha, WI 53188

ritechoiceducting.com
Sales@ritechoiceducting.com
(800) 612 7200

